

**WATER TANKS** • ROAD BARRIERS • CAR SHEDS • WASTE BINS & TROLLEYS • PALLETS • ROTOLINING  
PORTABLE RESTROOMS • AIR CONDITIONER COVERS • **ROAD BARRIERS** • CAR SHEDS • WASTE BINS &  
TROLLEYS • PALLETS • ROTOLINING • PORTABLE RESTROOMS • AIR CONDITIONER COVERS • WATER TANKS  
**CAR SHEDS** • WASTE BINS & TROLLEYS • PALLETS • ROTOLINING • PORTABLE RESTROOMS • AIR CONDITIONER  
COVERS • ROAD BARRIERS • **WASTE BINS & TROLLEYS** • PALLETS • ROTOLINING • PORTABLE RESTROOMS  
AIR CONDITIONER COVERS • WATER TANKS • ROAD BARRIERS • CAR SHEDS • **PALLETS** • ROTOLINING  
PORTABLE RESTROOMS • AIR CONDITIONER COVERS • WATER TANKS • ROAD BARRIERS • CAR SHEDS  
WASTE BINS & TROLLEYS • **ROTOLINING** • PORTABLE RESTROOMS • AIR CONDITIONER COVERS • WATER TANKS  
ROAD BARRIERS • CAR SHEDS • WASTE BINS & TROLLEYS • PALLETS • **PORTABLE RESTROOMS** • AIR  
CONDITIONER COVERS • WATER TANKS • ROAD BARRIERS • CAR SHEDS • WASTE BINS & TROLLEYS • PALLETS  
**AIR CONDITIONER COVERS** • WATER TANKS • ROAD BARRIERS • CAR SHEDS • WASTE BINS & TROLLEYS  
PALLETS • ROTOLINING • PORTABLE RESTROOMS • WATER TANKS • ROAD BARRIERS • CAR SHEDS

# POLYCON

**P O L Y C O N - M A D E I N T H E U A E . M A D E F O R T H E G C C .**

TROLLEYS • PALLETS • ROTOLINING • PORTABLE RESTROOMS • AIR CONDITIONER COVERS • WATER TANKS  
**CAR SHEDS** • WASTE BINS & TROLLEYS • PALLETS • ROTOLINING • PORTABLE RESTROOMS • AIR CONDITIONER  
COVERS • ROAD BARRIERS • **WASTE BINS & TROLLEYS** • PALLETS • ROTOLINING • PORTABLE RESTROOMS  
AIR CONDITIONER COVERS • WATER TANKS • ROAD BARRIERS • CAR SHEDS • **PALLETS** • ROTOLINING  
PORTABLE RESTROOMS • AIR CONDITIONER COVERS • WATER TANKS • ROAD BARRIERS • CAR SHEDS  
WASTE BINS & TROLLEYS • **ROTOLINING** • PORTABLE RESTROOMS • AIR CONDITIONER COVERS • WATER TANKS

**POLYCON GULF LTD.**

(A subsidiary of Al Nasser Industrial Ent. LLC)

A P O L Y C O N F O R E V E R Y

# home road AND weather

C O N D I T I O N

**Polycon Gulf Ltd** is the GCC's leading supplier of water tanks, road barriers and other rotomolded products to thousands of satisfied customers throughout the GCC.

Each Polycon product is manufactured using medium-density polyethylene – an environmentally compatible hydrocarbon.

Polycon Gulf Ltd is part of Al Nasser Industrial Enterprises (ANIE) – a well-reputed group with interests in metal, power, polymers, plastics and environmental protection. When the company was established in 1993 for the purpose of setting up a factory in Abu Dhabi to manufacture a wide range of polyethylene water and chemical storage tanks, it was the first of its kind in the GCC. Today, Polycon Gulf Ltd is on the threshold of an exciting stage in its growth – continuously investing and upgrading the necessary skills for the future.



YEARS OF **reliable** SERVICE

**P**olycon products are designed using the latest and finite analytical methods, allowing for suitable changes to be made to the thickness and variation of the products so that stresses and deflections can be minimised. This makes them resistant to heavy hydrostatic loads with a built-in factor of safety, thereby ensuring many years of service.



STRICT **quality** CONTROL

**A**t Polycon Gulf Ltd, products of the highest grade are produced. Strict quality control that meets the requirements of DIN ISO 9001:2008 at each stage of the manufacturing process.





# Water Storage Tanks

**P**olycon's water tanks are approved by the UAE Municipalities and FDA and carry material and performance guarantees. The material helps guard against bacteria, fungus and algae. It has high environmental stress resistance, and can withstand high-pressure impacts, poor temperature conditions and prevents water from ultra-violet radiation, rust and leakage.

It's no wonder that they're the first choice of architects, builders and consultants for a range of water storage applications in the UAE.

- **Clean and hygienic** – Specially designed with a smooth inner layer that resists growth of algae and bacteria
- **Leak-proof** – The one-piece, molded body has no joints and is absolutely maintenance free
- **Rust-proof** – Polyethylene granules used in the construction of the tanks ensure it is strong, durable and free from corrosion
- **Lightweight and easy to install** – Designed for easy handling, mobility and installation
- **Secure** – A special, threaded cover ensures that the tank and its contents cannot be tampered with
- **Strong and stress-resistant** – Special 'membrane ribs' that counter 'hoop stress' help reinforce the tanks
- **Vertical and horizontal models** – For particular space/design specifications
- **Suitable for overhead and underground applications** – Adaptable to a variety of applications; in households, water supply schemes, agricultural farms, chemical plants, defence, hospitals, offices, schools and colleges



Dome Shape Tanks



Horizontal Tank  
100-1000 USG.



Vertical Tank  
100-10000 USG.



Horizontal Tank  
1250-3000 USG.

POLYCON WATER TANKS. CHECK THE **facts**  
FOR YOURSELF

Item	Concrete	S Steel	Fibreglass	Polycon
Durability	Fair	Good	Poor	Excellent
Water Quality	Poor	Good	Fair	Excellent
Water Tightness	Fair	Good	Fair	Excellent
Transportation & Assembly	Poor	Fair	Poor	Excellent
Corrosion	Fair	Good	Fair	Excellent
Maintenance	Poor	Fair	Poor	Excellent
Flammability	Good	Good	Excellent	Fair
Cleaning	Poor	Excellent	Good	Excellent

**Physical Properties**

Melt index	5.0 g/10 min
Vicat softening	115.0° Celsius
Density	0.935 g/cubic cms
Bulk density	0.420 g/cubic cms
Tensile strength at yield	2600.0 Psi
Tensile elongation yield at break	700.00 %
Flexural strength	2800.00 Psi
Flexural modulus	105000 Psi
Environmental stress-crack resistance	F 50-300 Hr
Toxicity	Free from Toxic
Water absorption	0.20%

TRULY world class QUALITY

**A**ll Polycon Water Tanks are DIN ISO 9001:2008 certified and carry material and performance guarantees, that varies based on the type of application. Insulated models have a 5-year warranty. The UAE Municipalities and FDA also approve of Polycon Water Tanks.



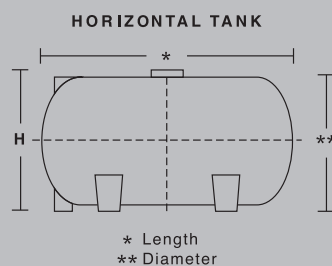
Dimension AND  
range AVAILABLE

**P**olycon Water Tanks are available in many sizes – from 100 gallons to 10,000 gallons. Listed adjoining table is the range of dimensions and their specifications.

CONVERSION  
Units

LITRE	GALLON	CUBIC METRES
500	132	1/2
1,000	265	1
1,500	396	1.5
2,000	528	2
2,500	660	2.5
3,000	792	3
4,000	1,057	4
5,000	1,321	5
6,000	1,585	6
7,000	1,851	7
8,000	2,113	8
10,000	2,645	10
12,000	3,170	12
16,000	4,232	16
20,000	5,291	20

# THE POLYCON range AND dimensions

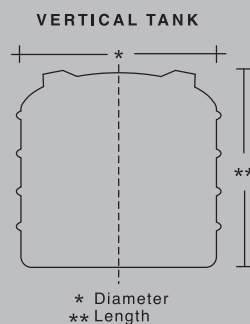


## HORIZONTAL TANKS

CODE NO	US GALLONS	IMP GALLONS	DIA (mm)	LENGTH (mm)	HEIGHT (mm)	MANHOLE SIZE (mm)	AVERAGE THICKNESS* (mm)	INSULATED TANK AVERAGE THICKNESS (mm)
PGH 10	100	83	740	1,300	780	370	4	6
PGH 20	200	166	920	1,440	940	370	5.5	7
PGH 25	250	208	980	1,540	1,005	370	5.5	7.5
PGH 30	300	250	960	1,640	1,010	370	6	8
PGH 40	400	334	1,120	1,600	1,180	475	6.5	9.5
PGH 50	500	416	1,150	1,940	1,180	475	7.5	10.5
PGH 60	600	498	1,300	2,000	1,300	475	8	11
PGH 80	800	666	1,380	2,100	1,445	475	9	12
PGH100	1,000	833	1,500	2,400	1,555	475	9.5	13
PGH125	1,250	1,040	1,850	2,250	1,900	475	10	13
PGH150	1,500	1,250	1,830	2,665	1,960	475	10.5	14
PGH200	2,000	1,666	1,940	3,135	2,035	475	12	14.5
PGH300	3,000	2,500	2,145	3,555	2,245	475	12.5	15

## VERTICAL TANKS

CODE NO	US GALLONS	IMP GALLONS	DIA (mm)	HEIGHT (mm)	MANHOLE SIZE (mm)	AVERAGE THICKNESS* (mm)	INSULATED TANK AVERAGE THICKNESS (mm)
PGV 10	100	83	880	915	370	4	5.5
PGV 20	200	166	1,020	1,190	370	4	6
PGV 30	300	250	1,060	1,505	370	4.5	6.5
PGV 40	400	334	1,300	1,340	370	5.5	7
PGV 50	500	416	1,320	1,480	370	6	8
PGV 60	600	499	1,320	1,880	370	6	8.5
PGV 80	800	666	1,500	1,940	370	7.5	9
PGV 100	1,000	833	1,820	1,630	475	8	10
PGV 125	1,250	1,040	1,820	1,950	475	8	10.5
PGV 125SP	1,250	1,040	2,150	1,500	475	8	10.5
PGV 150	1,500	1,250	2,000	2,085	475	8.5	11
PGV 200	2,000	1,667	2,080	2,380	475	9.5	12
PGV 250	2,500	2,083	2,820	1,785	475	9.5	12.5
PGV 300	3,000	2,500	2,340	2,820	475	10	13
PGV 400	4,000	3,333	2,820	2,610	475	10	13.5
PGV 500	5,000	4,166	2,820	3,325	475	12.5	14
PGV 600	6,000	4,996	2,990	3,510	475	13.5	15.5
PGV 750	7,500	6,250	3,025	4,350	475	16	19
PGV 1000	10,000	8,333	3,290	4,800	475	17.5	20



\* Tolerance: 3% of the nominal dimensions as given in the table

All above shapes & sizes of tanks are available in **STANDARD THREE LAYERS** as well as **FOUR LAYER INSULATED TYPE**.





The new generation of polyethylene water storage tanks from Polycon Gulf Ltd have a unique, 4-layer insulation. Above models are available in sizes from 400 to 1,000 US gallons capacity.

**INSULATED TANKS**

CODE NO	US GALLON	DIA (mm)	LENGTH (mm)	HEIGHT (mm)	MANHOLE SIZE (mm)	AVERAGE THICKNESS* (mm)
PGHI40	400	1,180	1,600	1,275	395	10
PGHI50	500	1,200	1,945	1,265	395	11
PGHI60	600	1,300	1,985	1,390	395	12
PGHI80	800	1,430	2,285	1,550	395	14
PGHI100	1,000	1,650	2,280	1,700	395	15

\* Tolerance: 3% of the nominal dimensions as given in the table.

# Underground Water Storage Tank

The Best in Underground



## Unique Features

- Rotationally molded from FDA approved UV Stabilised Polyethylene
- Polycor underground storage tank/septic tank is designed to withstand earth pressures that would normally crack traditional tanks
- Deeply formed corrugation and longitudinal ribs lend extra strength and stability
- This tank does not rust, rot or corrode even without protective coating
- Seamless, one piece construction
- Large 18" entry/view port with a man-way riser and a threaded cover are included
- Light weight and compact No heavy lifting equipment is required for installation
- Polycor underground tanks are manufactured as single-piece units. If simple installation guidelines are followed and tanks are inspected, you can expect long, trouble-free service

## TANK specification

Model	Capacity (USG)	Outer Diameter (mm)	Length (mm)	Height up to neck (mm)	Manhole size (mm)
PGUG 100	1,000	1,550	2,850	2,110	475

# Connection/Interconnection of Polycon Water Tank

For Vertical & Horizontal tanks

No.	Description	No.	Description
1.	Air Vent	4.	Pipe
2.	Ball Valve	5.	Manifold pipe
3.	Flexible Pipe Fittings	6.	Pump

## Procedure:

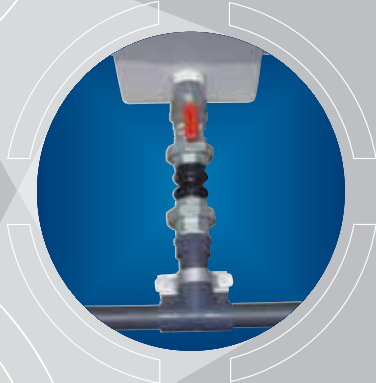
1. You will receive the Polycon water tank with loose PP Fittings and holes drilled as per your requirements.
2. Place the tank on smooth, properly leveled platform.
3. First fix one rubber washer on flange side thread of the fitting, apply thread sealant, teflon tape on that threads & insert the fitting into the hole by turning it clockwise. After inserting it properly, fix another rubber gasket from tank inside and tighten checknut.
4. Hold the fittings with pipe wrench or suitable spanner and fix ball valve, flexible pipe and connect pipeline.
5. Provide properly leveled support under outlet pipe or Manifold pipe and fix the clamp on it to avoid stress on the tank.
6. Fix the Air vent on top of the tank or provide open fitting with elbow of same size of outlet and inlet fittings to release the pressure from tank.

Flexible pipe connection required to preserve warranty, allows for tank expansion/contraction and to reduce pump/piping vibration stress on the tank and increase the useful life of tank.

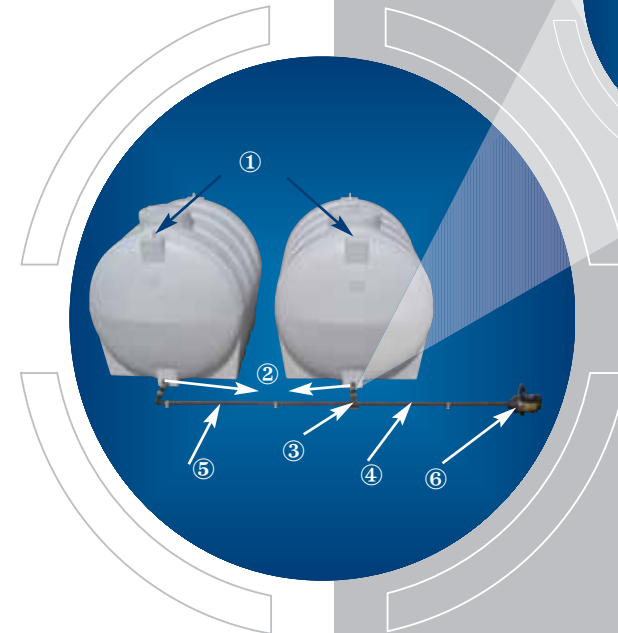
**Note: Polycon will not be responsible for any damage/breakage to the tank due to improper connection of fittings or wrong interconnection of the tank.**



VERTICAL TANK



FLEXIBLE  
PIPE FITTINGS

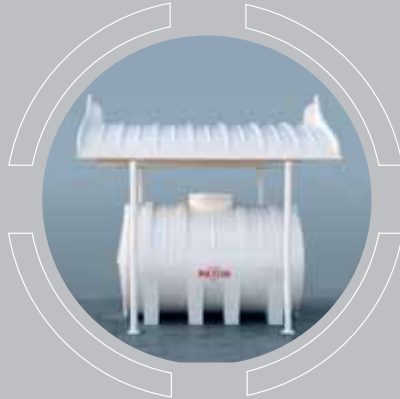


HORIZONTAL TANK

# Polycon OTHER Products



Road Barrier



Water Tank Shed



240 Ltr Wheeler



Garbage Collection Trolley



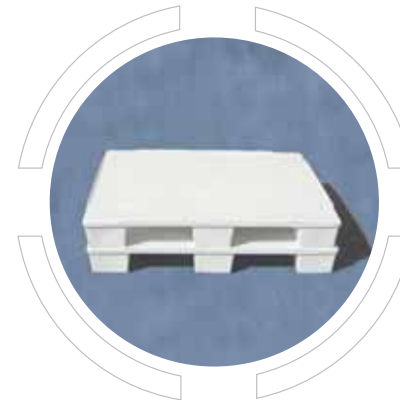
Square Refuse Bin



Underground  
Water Storage Tank



110 Ltr Garbage Bin



Plastic Pallets



1100 Ltr Garbage Bin



# Road Barriers

Polycon's new range of road barriers is strong, sturdy and flexible, ideal for today's roads.

- Made from high quality UV-Stabilised polyethylene material
- Very safe in case of accidents for the vehicle and its passengers
- Light weight
- Handle without crane and save on loading/unloading cost
- Control the weight by filling water or sand
- Available in black/white/red/yellow
- Maintenance-free

## Dimensions AND range AVAILABLE

Height (mm)	Length (mm)	Top Width (mm)	Bottom Width (mm)	Weight when empty (kgs)
800	2,000	170	635	38
1,000	2,152	145	530	28

Tolerance: 2% of the nominal dimensions as given in the table



New Barriers 1.0 mtr Height



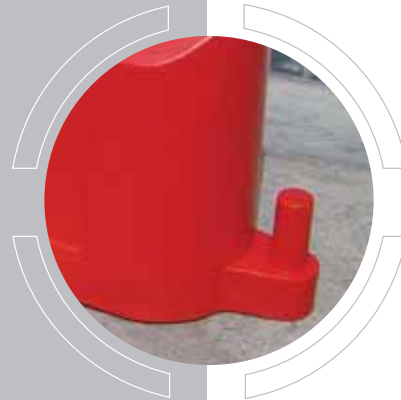
1.0 mtr Height



0.8 mtr Height

# Polycon Track Barrier System

Affordable Professional and Safe



## Good looking and versatile

Our unique track barrier system is better looking than the tyres or wooden fencing alternatives, and conveys a safe, professional system.

## Safe, durable and cost effective

Whatever your track formation, our track barrier system remains interlocked without any gaps, protrusions or obstacles, providing a solid all in one track wall for maximum safety.

## Caption:

TB 1000 Barrier system  
1000 mm x 600 mm x 400 mm (L x H x W)

Whether it is an outdoor or indoor track for karts or quad bikes, this has proven to be the safest and most effective track barrier system.

Manufactured at our plant in Mussafah, Abu Dhabi, the track barriers are made from the highest quality of virgin UV Stabilised material.

## Features AND benefits

- Designed to improve security and safety for drivers, spectators and staff
- Quick and easy positioning system
- Linked system make moving the track course layout quick and easy compared with other systems
- Manufactured in UV Stabilised virgin medium density polyethylene
- Excellent impact strength
- Heavy duty design and material thickness
- Affordable professional locking system
- The barriers are designed to allow 30° movements
- Barriers make a fantastic medium for advertising that can generate surplus revenue
- Can be produced in any colour subject to quantity
- In house facility to develop customised sizes

## Track Barrier Applications

- Indoor and Outdoor tracks
- Race Circuits
- Go-Kart
- Quad Bikes racing, Speedways, Rallying, Motor Cross

# Waste Bins

The Last Word in Cleanliness

## Features

- Rotationally molded from high temperature resistant UV Stabilised Polyethylene
- Single Seamless Unit – no joints or welding
- Recyclable, shock-resistant & weather-proof
- Water & air-tight basin to trap liquids & bad odour
- 100% Recyclable

## 1100 Ltr. Bin – Special Features

- Molded drain-plug for easy washout
- Fully equipped for hooking, lifting & moving
- Solid Rubber Wheels – 360° Swiveling on 4 wheels

Capacity	Height	Length	Width
120 Ltr.	880 mm	460 mm	540 mm
240 Ltr.	1,100 mm	590 mm	730 mm
1,100 Ltr.	1,375 mm	1,425 mm	1,040 mm

Tolerance: ±3% in dimensions



1100 Ltr. Garbage Bin

# Waste Bin Containers & Trolley

New Product For Environment Friendliness



240 Ltr. Wheeler



Garbage Collection Trolley



25 Ltr. Square Refuse Bin



110 Ltr. Garbage Bin

## Special features

- Rotationally molded from high resistance UV Stabilised polyethylene
- Seamless, one piece construction
- Smooth seamless surface is easy to clean
- Lighter weight and much easier to handle
- Recyclable, shock resistant & weatherproof
- No maintenance, no dents and no colour fading
- Available in standard Olive Green colour
- Custom colour made available on request
- Your company's logo can be screen printed on request



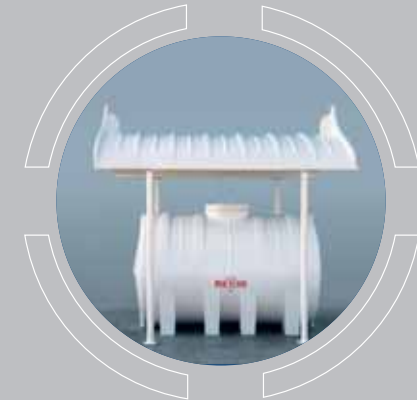
# Car/Tank Sheds

Polycon's new range of polyethylene car sheds is ideal for the harsh weather in the region. These state-of-the-art sheds are absolutely maintenance-free and depending on your choice of design, you can choose from white or any other colour.

- Made from high quality UV Stabilised polyethylene material that withstands extreme heat
- Light-weight makes it easy to install
- Smooth internal and external finishing prevents deposition of dust
- Washable
- Any design possible
- Available in white or any colour of your choice
- Maintenance-free



Curve Design



Water Tank Shed



Islamic Design



Cantilever Shed

## Dimensions AND range AVAILABLE

Width (mm)	Length (mm)	Height at centre (mm)	Usage
3,000	6,000	400	Car Shed
3,000	3,000	400	Tank Shed
2,000	3,000	450	Tank Shed
2,000	2,000	450	Tank Shed

# High Performance

## Polyethylene Pallets



### Unique Features

- Made from FDA approved UV Stabilised Polyethylene material
- Smooth exterior; easy to clean and wash
- Compatible with all existing lifting systems
- Excellent resistance to most chemicals
- 100% rot-free, no dent, maintenance-free
- 100% hygienic, safe and sterilisable
- Stackable design with 4-way entry. Compatible with all existing lifting systems
- Easy to repair

### Specifications

Model	Single Face Type
Size:	1200x1000x160 mm.
Design:	One piece molded filled with Polyethylene Foam for High Impact resistance
Uniform load capacity:	Static – 1,500 kgs; Dynamic – 750 kgs.
Material:	FDA approved polyethylene – 100% Recyclable
Application:	Food & Beverage industry; Pharmaceutical industry where clean room applications are important
Colour:	Available in a range of colours

### Advantages over Wood Pallets

Plastic Pallets	Wooden Pallets
FDA approved material, guaranteed to last a long time.	Low in initial costs only. When they break down, can cause injurious
Plastic as material is very light and easy to handle – no absorption or change in weight.	Heavy and awkward to handle, can absorb up to 100% of original weight
Molded one-piece construction and smooth exterior easy to clean and can be completely sanitised	Wood pieces and nails used for construction and unsanitary for food industries.
Appropriate for food, Pharmaceutical industries and other sensitive goods	Unsanitary-FDA has proven wood to have germs bearing characteristics.
Stackable design with 4-way entry saves valuable time	Non-stackable design, increase space needs.

# Air-conditioner Cover

Clean up the air around you

## New Generation of Polyethylene Window Air Conditioner Cover

- Overall Dimensions – 985 x 600 x 600 (l x w x h in mm)
- 12 molded holes (lengthwise) and 16 holes (widthwise) for better air circulation
- Molded from FDA approved UV Stabilised Polyethylene
- Lightweight, strong, durable & rust-free
- Double-wall construction & smooth surface allow easy cleaning
- Nestable Drip-tray for water collection also available with extra cost
- Four molded holes on each side for easy installation
- Available in different colours

\*Tolerance:  $\pm 3\%$  in dimensions.





ASSOCIATION OF ROTATIONAL MOLDERS

**POLYCON GULF LTD.**



Abu Dhabi: P.O.Box: 8501, Mussafah, Tel: +971 2 5540360, Fax: +971 2 5540361    Dubai: PO Box: 34998, Tel: +971 4 3965330, Fax: +971 4 3964846  
 Al Ain: Tel: +971 3 7217967, Fax: +971 3 7217967    Head Office: Falcon Tower, Al Nasr Street, P.O.Box 44903, Abu Dhabi, U.A.E. Tel: +971 2 6318044, Fax: +971 2 6318007  
 www.anieuae.com / www.polycongulf.com  
 E-mail: polycon@emirates.net.ae